

**MORTALITY FROM SMOKING
IN DEVELOPED COUNTRIES
1950–2000**

(2nd edition, revised June 2006:
www.deathsfromsmoking.net)

Richard Peto, Alan D Lopez,
Jillian Boreham and Michael Thun

DENMARK

Raw data (pages 152–53, 154–55)

Analyses (pages 156–57, 158–59, 160–61)

Appendix (pages 162–63)

DENMARK: 2000

| | | No. of deaths (Source: WHO) | | | Standardised rates (defined overleaf) | | | Annual death rates / 100,000 (zero denoted by -) | | | | | | |
|---------------------------------------|---|--------------------------------|-----------------|-------|--|--------|--------|---|-------|-------|-------|-------|-------|-------|
| | | All ages | 0-34 | 35-69 | All ages | 0-34 | 35-69 | 0-4 | 5-9 | 10-14 | 15-19 | 20-24 | 25-29 | 30-34 |
| ALL CAUSES | M | 27761 | 838 | 8759 | 900.2 | 67.0 | 897.9 | 127.1 | 12.9 | 16.1 | 60.7 | 84.0 | 75.1 | 93.0 |
| | F | 29283 | 431 | 6089 | 624.6 | 36.2 | 608.7 | 99.6 | 5.3 | 10.9 | 30.5 | 26.8 | 37.3 | 42.7 |
| Tuberculosis | M | 23 | - | 7 | 0.8 | - | 0.6 | - | - | - | - | - | - | - |
| | F | 15 | - | 4 | 0.3 | - | 0.4 | - | - | - | - | - | - | - |
| HIV | M | 24 | 2 | 22 | 0.9 | 0.2 | 1.7 | - | - | - | 0.7 | - | 0.5 | - |
| | F | 5 | 2 | 3 | 0.2 | 0.2 | 0.2 | - | 0.6 | - | - | - | - | 0.5 |
| Other infective and parasitic | M | 129 | 9 | 38 | 4.2 | 0.8 | 3.6 | 2.9 | - | 0.6 | 0.7 | 0.6 | - | 0.5 |
| | F | 178 | 5 | 37 | 3.8 | 0.4 | 3.8 | 1.2 | - | - | - | 0.6 | 1.0 | - |
| ALL CANCER | M | 7832 | 83 | 3118 | 259.4 | 6.7 | 329.0 | 2.3 | 3.9 | 3.9 | 9.1 | 7.1 | 9.3 | 11.0 |
| | F | 7646 | 68 | 3007 | 197.8 | 5.4 | 298.4 | 1.2 | 0.6 | 3.4 | 2.9 | 4.9 | 9.4 | 15.1 |
| Mouth and pharynx cancer | M | 215 | 2 | 149 | 7.5 | 0.2 | 14.4 | - | - | - | - | 0.6 | - | 0.5 |
| | F | 93 | - | 38 | 2.4 | - | 3.7 | - | - | - | - | - | - | - |
| Oesophagus cancer | M | 280 | 3 | 153 | 9.6 | 0.2 | 15.6 | - | - | - | - | - | 0.5 | 1.0 |
| | F | 132 | 1 | 52 | 3.4 | 0.1 | 5.3 | - | - | - | - | - | - | 0.5 |
| Stomach cancer | M | 235 | 2 | 105 | 7.9 | 0.1 | 11.1 | - | - | - | - | - | - | 1.0 |
| | F | 133 | 1 | 40 | 3.2 | 0.1 | 4.1 | - | - | - | - | - | - | 0.5 |
| Colorectal cancer | M | 983 | 3 | 345 | 32.0 | 0.2 | 36.4 | - | - | - | - | 0.6 | - | 1.0 |
| | F | 1081 | 5 | 296 | 25.1 | 0.4 | 30.1 | - | - | - | - | - | 0.5 | 2.0 |
| Liver cancer | M | 119 | 1 | 68 | 4.1 | 0.1 | 7.1 | - | - | - | - | - | - | 0.5 |
| | F | 82 | 2 | 32 | 2.2 | 0.2 | 3.2 | - | - | 0.7 | - | 0.6 | - | - |
| Pancreas cancer | M | 387 | 1 | 185 | 13.0 | 0.1 | 19.0 | - | - | - | - | - | 0.5 | - |
| | F | 408 | - | 149 | 10.3 | - | 15.2 | - | - | - | - | - | - | - |
| Larynx cancer | M | 102 | - | 54 | 3.5 | - | 5.5 | - | - | - | - | - | - | - |
| | F | 24 | - | 8 | 0.7 | - | 0.7 | - | - | - | - | - | - | - |
| Lung cancer | M | 1997 | 3 | 892 | 67.4 | 0.2 | 96.8 | - | - | - | - | - | - | 1.4 |
| | F | 1433 | 3 | 677 | 40.1 | 0.2 | 68.8 | - | - | - | - | - | 0.5 | 1.0 |
| Malignant melanoma | M | 108 | 2 | 57 | 3.7 | 0.1 | 5.9 | - | - | - | - | - | - | 1.0 |
| | F | 108 | 3 | 53 | 3.0 | 0.2 | 4.8 | - | - | - | - | 0.6 | 0.5 | 0.5 |
| Female breast cancer | F | 1329 | 5 | 666 | 36.6 | 0.4 | 63.9 | - | - | - | - | - | 1.6 | 1.0 |
| Cervix cancer | F | 142 | 10 | 66 | 4.1 | 0.8 | 6.1 | - | - | - | - | 1.2 | 2.6 | 1.5 |
| Other uterine cancer | F | 180 | 1 | 67 | 4.6 | 0.1 | 6.5 | - | - | - | - | - | 0.5 | - |
| Ovarian cancer | F | 465 | 2 | 252 | 13.6 | 0.2 | 24.7 | - | - | - | 0.7 | - | 0.5 | - |
| Prostate cancer | M | 1084 | - | 200 | 33.9 | - | 24.2 | - | - | - | - | - | - | - |
| Bladder cancer | M | 419 | - | 116 | 13.5 | - | 13.8 | - | - | - | - | - | - | - |
| | F | 185 | - | 43 | 4.2 | - | 4.5 | - | - | - | - | - | - | - |
| Other and ill-defined cancer sites | M | 1336 | 39 | 561 | 44.5 | 3.2 | 55.7 | 2.3 | 3.4 | 2.6 | 3.5 | 3.0 | 6.2 | 1.4 |
| | F | 1347 | 21 | 401 | 32.0 | 1.7 | 39.8 | 0.6 | 0.6 | 1.4 | 2.2 | 1.8 | 1.0 | 4.5 |
| Hodgkin's disease | M | 10 | 1 | 6 | 0.3 | 0.1 | 0.6 | - | - | - | - | - | - | 0.5 |
| | F | 13 | 4 | 5 | 0.4 | 0.3 | 0.4 | - | - | - | - | - | 0.5 | 1.5 |
| Myeloma and non-Hodgkin lymphomas | M | 316 | 9 | 142 | 10.5 | 0.7 | 14.4 | - | - | - | 0.7 | 1.2 | - | 2.9 |
| | F | 279 | 3 | 102 | 6.9 | 0.2 | 10.5 | - | - | - | - | - | 0.5 | 1.0 |
| Leukaemia | M | 241 | 17 | 85 | 8.1 | 1.5 | 8.6 | - | 0.6 | 1.3 | 4.9 | 1.8 | 2.1 | - |
| | F | 212 | 7 | 60 | 5.1 | 0.6 | 6.1 | 0.6 | - | 1.4 | - | 0.6 | 0.5 | 1.0 |
| Diabetes | M | 758 | 4 | 272 | 24.8 | 0.3 | 28.5 | - | - | - | - | - | - | 1.9 |
| | F | 675 | 4 | 141 | 14.4 | 0.3 | 14.1 | - | - | - | - | - | 1.0 | 1.0 |
| ALL VASCULAR DISEASE | M | 9754 | 37 | 2289 | 307.0 | 2.8 | 246.8 | 0.6 | - | - | 2.1 | 3.0 | 4.6 | 9.1 |
| | F | 10777 | 25 | 1035 | 195.5 | 2.0 | 108.5 | 2.4 | 0.6 | 1.4 | 1.5 | 1.2 | 4.2 | 3.0 |
| Rheumatic heart disease and fever | M | 12 | 1 | 2 | 0.4 | 0.1 | 0.2 | - | - | - | - | - | 0.5 | - |
| | F | 11 | - | 2 | 0.2 | - | 0.2 | - | - | - | - | - | - | - |
| Hypertensive disease | M | 229 | 3 | 92 | 7.5 | 0.2 | 9.8 | - | - | - | - | 0.6 | - | 1.0 |
| | F | 272 | - | 27 | 5.2 | - | 2.9 | - | - | - | - | - | - | - |
| Ischaemic heart disease | M | 4743 | 5 | 1197 | 150.0 | 0.4 | 129.1 | - | - | - | - | 0.6 | 1.0 | 1.0 |
| | F | 4368 | 2 | 403 | 78.5 | 0.1 | 43.1 | - | - | - | - | - | 0.5 | 0.5 |
| Pulmonary embolism and other venous | M | 138 | 3 | 48 | 4.5 | 0.2 | 5.0 | - | - | - | 0.7 | - | - | 1.0 |
| | F | 195 | 3 | 41 | 4.3 | 0.3 | 3.9 | - | - | - | 1.5 | - | - | 0.5 |
| Cerebrovascular disease | M | 2032 | 10 | 416 | 63.4 | 0.7 | 44.9 | - | - | - | - | 0.6 | 1.0 | 3.4 |
| | F | 2962 | 4 | 314 | 54.4 | 0.3 | 32.2 | - | - | - | - | - | 1.6 | 0.5 |
| Other vascular disease | M | 2600 | 15 | 534 | 81.2 | 1.2 | 57.8 | 0.6 | - | - | 1.4 | 1.2 | 2.1 | 2.9 |
| | F | 2969 | 16 | 248 | 52.9 | 1.3 | 26.2 | 2.4 | 0.6 | 1.4 | - | 1.2 | 2.1 | 1.5 |
| Chronic obstructive pulmonary disease | M | 1752 | 2 | 341 | 55.1 | 0.2 | 40.3 | 0.6 | - | - | - | 0.6 | - | - |
| | F | 1913 | 2 | 484 | 45.5 | 0.2 | 53.1 | - | - | - | - | 0.6 | - | 0.5 |
| Other respiratory disease | M | 675 | 6 | 85 | 20.4 | 0.5 | 8.8 | 0.6 | - | 0.6 | - | 0.6 | 0.5 | 1.0 |
| | F | 882 | 4 | 52 | 15.0 | 0.3 | 5.2 | 1.8 | - | - | - | - | 0.5 | - |
| Peptic ulcer | M | 228 | 1 | 43 | 7.1 | 0.1 | 5.0 | - | - | - | - | - | 0.5 | - |
| | F | 339 | 1 | 31 | 6.2 | 0.1 | 3.2 | - | - | - | - | - | - | 0.5 |
| Liver cirrhosis | M | 574 | 8 | 489 | 20.6 | 0.5 | 44.4 | - | - | - | - | - | - | 3.8 |
| | F | 227 | 2 | 180 | 7.6 | 0.1 | 15.8 | - | - | - | - | - | - | 1.0 |
| Renal disease | M | 224 | 2 | 40 | 6.9 | 0.2 | 4.4 | - | - | - | 0.7 | - | 0.5 | - |
| | F | 202 | - | 40 | 4.2 | - | 4.0 | - | - | - | - | - | - | - |
| Pregnancy, birth | F | - | - | - | - | - | - | - | - | - | - | - | - | - |
| Congenital and perinatal causes | M | 210 | 179 | 27 | 9.2 | 14.7 | 2.2 | 96.0 | - | 1.3 | 1.4 | 1.2 | 1.5 | 1.4 |
| | F | 173 | 134 | 29 | 7.7 | 11.6 | 2.5 | 74.7 | 1.8 | 1.4 | 1.5 | 0.6 | - | 1.5 |
| Ill-defined causes | M | 1020 | 28 | 297 | 32.7 | 2.2 | 30.2 | 5.8 | - | - | 1.4 | 1.2 | 1.5 | 5.3 |
| | F | 1534 | 15 | 152 | 27.5 | 1.3 | 15.7 | 4.9 | - | - | 0.7 | 1.2 | 0.5 | 1.5 |
| Other medical causes | M | 2668 | 68 | 904 | 86.1 | 5.4 | 87.1 | 10.4 | 3.4 | 2.6 | 3.5 | 6.5 | 4.1 | 7.7 |
| | F | 3251 | 47 | 550 | 65.4 | 4.0 | 53.6 | 6.1 | - | 2.0 | 4.4 | 5.5 | 4.7 | 5.0 |
| ALL NON-MEDICAL CAUSES | M | 1890 | 409 | 787 | 65.0 | 32.6 | 65.3 | 8.1 | 5.6 | 7.1 | 41.2 | 63.3 | 51.9 | 51.3 |
| | F | 1466 | 122 | 344 | 33.6 | 10.3 | 30.1 | 7.3 | 1.8 | 2.7 | 19.6 | 12.2 | 15.7 | 13.1 |
| Road traffic accidents | M | 315 | 149 | 108 | 11.8 | 12.5 | 9.2 | 2.9 | 2.8 | 5.2 | 22.3 | 29.6 | 14.9 | 9.6 |
| | F | 148 | 46 | 54 | 4.9 | 4.1 | 4.7 | 0.6 | 1.2 | 2.0 | 11.6 | 5.5 | 4.2 | 3.5 |
| Fire | M | 40 | 8 | 17 | 1.4 | 0.6 | 1.2 | - | 0.6 | - | 0.7 | 0.6 | 2.1 | 0.5 |
| | F | 26 | - | 10 | 0.6 | - | 0.9 | - | - | - | - | - | - | - |
| Suicide | M | 533 | 101 | 321 | 18.9 | 7.9 | 27.0 | - | - | 0.6 | 8.4 | 16.0 | 13.9 | 16.3 |
| | F | 194 | 25 | 114 | 6.2 | 2.1 | 9.6 | - | - | - | 5.1 | 1.2 | 4.2 | 4.0 |
| Homicide | M | 35 | 10 | 21 | 1.3 | 0.8 | 1.6 | 1.2 | - | - | 0.7 | - | 1.5 | 1.9 |
| | F | 32 | 17 | 12 | 1.2 | 1.4 | 1.0 | 1.8 | 0.6 | 0.7 | 1.5 | 1.8 | 2.6 | 1.0 |
| POPULATION: | | | M=male | | | | | | | | | | | |
| (1000s; UN, 2004 revision) | | | F=female | | | | | | | | | | | |
| | | | | | 2639.2 | 1221.9 | 1191.0 | 173.9 | 177.7 | 154.9 | 143.3 | 169.0 | 194.5 | 208.6 |
| | | | | | 2700.3 | 1171.8 | 1182.0 | 164.7 | 169.0 | 146.5 | 137.8 | 164.1 | 190.5 | 199.2 |

2000: DENMARK

| Annual death rates / 100,000 (zero denoted by -) | | | | | | | | | | | 9th ICD/10th ICD categories | |
|---|-------|-------|-------|-------|--------|--------|--------|--------|---------|---|--|---|
| 35-39 | 40-44 | 45-49 | 50-54 | 55-59 | 60-64 | 65-69 | 70-74 | 75-79 | 80+/NK | | | |
| 137.2 | 245.4 | 390.2 | 545.5 | 960.2 | 1459.0 | 2547.8 | 4069.8 | 6840.1 | 14124.1 | M | ALL CAUSES | 001-999/A00-Y89 |
| 78.3 | 132.2 | 250.7 | 389.3 | 614.9 | 1033.6 | 1762.2 | 2734.5 | 4139.2 | 11124.7 | F | | |
| - | 1.0 | - | - | 1.2 | 2.3 | - | 6.9 | 7.3 | 7.1 | M | Tuberculosis | 010-018, 137/ A15-A19, B90 |
| 3.8 | 1.0 | 2.2 | 2.5 | 0.6 | 0.8 | 1.0 | - | - | - | F | | |
| 0.5 | 0.5 | - | 0.5 | - | - | - | - | - | - | M | HIV | 279.5, 279.6/B20-B24 |
| 1.0 | 2.1 | 2.2 | 4.0 | 2.3 | 7.7 | 5.8 | 13.7 | 36.3 | 64.2 | M | Other infective and parasitic | Rest of 001-139/rest of A00-B99 excl A33,A34 |
| - | 1.1 | 2.2 | 2.6 | 2.9 | 3.7 | 13.9 | 13.2 | 18.3 | 73.3 | F | | |
| 20.6 | 46.7 | 107.4 | 178.8 | 372.0 | 584.2 | 993.2 | 1433.6 | 2036.3 | 2820.3 | M | ALL CANCER | 140-208/C00-C97 |
| 25.6 | 57.4 | 111.5 | 212.2 | 342.1 | 532.8 | 807.3 | 1012.2 | 1242.9 | 1601.8 | F | | |
| 1.4 | 2.6 | 10.3 | 12.5 | 22.5 | 18.5 | 32.9 | 28.6 | 29.1 | 27.1 | M | Mouth and pharynx cancer | 140-149/C00-C14 |
| 0.5 | - | 3.3 | 2.6 | 2.9 | 9.0 | 7.8 | 9.4 | 16.3 | 20.4 | F | | |
| - | 1.6 | 8.1 | 13.0 | 17.3 | 27.8 | 41.5 | 46.9 | 53.8 | 65.6 | M | Oesophagus cancer | 150/C15 |
| - | - | 1.7 | 3.1 | 7.0 | 9.0 | 16.5 | 17.9 | 21.3 | 27.5 | F | | |
| 0.5 | 2.6 | 3.8 | 7.5 | 9.2 | 19.3 | 34.8 | 40.0 | 45.1 | 88.4 | M | Stomach cancer | 151/C16 |
| 1.0 | - | 0.6 | 2.0 | 4.7 | 9.0 | 11.3 | 19.8 | 30.5 | 28.9 | F | | |
| 1.9 | 4.2 | 11.3 | 18.5 | 43.3 | 70.3 | 105.3 | 169.3 | 268.9 | 430.8 | M | Colorectal cancer | 153, 154/C18-C21 |
| 2.0 | 3.8 | 9.9 | 14.8 | 37.2 | 51.5 | 91.1 | 143.1 | 193.1 | 308.7 | F | | |
| - | 1.0 | 2.7 | 4.0 | 8.7 | 14.7 | 18.4 | 18.3 | 29.1 | 20.0 | M | Liver cancer | 155.0/C22 excl C221 |
| 1.0 | - | 1.7 | 3.1 | - | 9.0 | 7.8 | 10.4 | 14.2 | 16.2 | F | | |
| 0.5 | 3.1 | 6.5 | 16.5 | 21.3 | 30.1 | 55.1 | 66.4 | 106.1 | 99.9 | M | Pancreas cancer | 157/C25 |
| 0.5 | 1.1 | 3.9 | 8.7 | 18.6 | 26.1 | 47.7 | 53.7 | 78.3 | 88.1 | F | | |
| 0.5 | 1.6 | 2.7 | 3.0 | 6.9 | 10.0 | 13.5 | 18.3 | 18.9 | 27.1 | M | Larynx cancer | 161/C32 |
| - | - | 0.6 | - | 2.9 | 0.7 | 0.9 | 8.5 | 3.0 | 2.8 | F | | |
| 1.0 | 8.9 | 22.7 | 44.0 | 105.5 | 181.6 | 314.0 | 455.4 | 565.4 | 449.4 | M | Lung cancer | 162/C33, C34 |
| 2.0 | 10.3 | 16.6 | 42.3 | 78.0 | 127.6 | 204.9 | 235.4 | 256.1 | 176.9 | F | | |
| 1.0 | 1.0 | 2.7 | 3.5 | 7.5 | 7.0 | 18.4 | 16.0 | 11.6 | 38.5 | M | Malignant melanoma | 172/C43 |
| 1.5 | 3.8 | 3.9 | 4.6 | 4.1 | 8.2 | 7.8 | 13.2 | 10.2 | 19.7 | F | | |
| 4.5 | 21.7 | 36.4 | 53.6 | 80.3 | 100.0 | 151.0 | 150.7 | 150.4 | 246.7 | F | Female breast cancer | 174/C50 |
| 4.5 | 4.9 | 3.9 | 4.6 | 4.1 | 6.7 | 13.9 | 16.9 | 18.3 | 21.1 | F | Cervix cancer | 180/C53 |
| - | 0.5 | 1.1 | 7.7 | 8.7 | 12.7 | 14.8 | 29.2 | 28.5 | 37.4 | F | Other uterine cancer | 179, 182/C54, C55 |
| 3.0 | 3.8 | 11.6 | 22.4 | 22.7 | 48.5 | 60.8 | 73.4 | 62.0 | 50.7 | F | Ovarian cancer | 183/C56, C570-C574 |
| - | - | 0.5 | 2.5 | 16.1 | 41.7 | 108.2 | 194.5 | 345.9 | 679.0 | M | Prostate cancer | 185/C61 |
| 0.5 | 1.0 | 2.7 | 3.0 | 6.3 | 19.3 | 63.8 | 70.9 | 126.5 | 219.7 | M | Bladder cancer | 188/C67 |
| - | 0.5 | - | 0.5 | 6.4 | 11.2 | 13.0 | 26.4 | 37.6 | 54.3 | F | | |
| 10.6 | 12.1 | 26.4 | 34.5 | 79.0 | 99.7 | 127.5 | 227.7 | 296.5 | 475.0 | M | Other and ill-defined cancer sites | Rest of 140-199/ rest of C00-C80, C97 |
| 1.5 | 7.0 | 11.6 | 32.7 | 48.9 | 65.7 | 111.1 | 154.4 | 236.8 | 372.1 | F | | |
| - | - | - | - | 1.7 | 2.3 | - | 1.1 | 1.5 | 1.4 | M | Hodgkin's disease | 201/C81 |
| 0.5 | - | - | 1.0 | - | 1.5 | - | - | 2.0 | 1.4 | F | | |
| 1.0 | 3.7 | 3.8 | 10.0 | 17.9 | 30.9 | 33.8 | 38.9 | 78.5 | 109.8 | M | Myeloma and non- Hodgkin lymphomas | 200, 202-203/ C82-C90, C96 |
| 2.0 | - | 3.9 | 4.6 | 9.3 | 22.4 | 31.3 | 28.2 | 43.7 | 71.2 | F | Leukaemia | 204-208/C91-C95 |
| 1.9 | 3.1 | 3.2 | 6.5 | 8.7 | 10.8 | 26.1 | 41.2 | 59.6 | 88.4 | M | | |
| 1.0 | - | 1.1 | 4.1 | 6.4 | 14.2 | 15.6 | 21.7 | 40.7 | 57.8 | F | | |
| 1.9 | 6.8 | 10.8 | 17.0 | 27.1 | 51.8 | 84.1 | 145.3 | 199.1 | 311.0 | M | Diabetes | 250/E10-E14 |
| 2.0 | 3.3 | 5.0 | 5.6 | 19.8 | 21.6 | 41.7 | 72.5 | 100.6 | 249.5 | F | | |
| 12.9 | 33.6 | 71.2 | 116.9 | 253.2 | 423.5 | 816.4 | 1430.2 | 2686.0 | 6176.9 | M | ALL VASCULAR DISEASE | 390-459/I00-I99 |
| 8.5 | 18.4 | 30.9 | 50.0 | 72.1 | 205.2 | 374.1 | 759.9 | 1465.4 | 5262.9 | F | | |
| - | - | - | 0.5 | - | - | 1.0 | 1.1 | 2.9 | 8.6 | M | Rheumatic heart disease and fever | 390-398/I00-I09 |
| - | - | - | - | 0.6 | - | 0.9 | 0.9 | 3.0 | 3.5 | F | | |
| - | 1.0 | 3.2 | 4.5 | 11.0 | 20.9 | 28.0 | 30.9 | 55.2 | 98.4 | M | Hypertensive disease | 401-405/I10-I15 |
| - | - | 1.1 | 1.5 | 2.3 | 3.0 | 12.2 | 31.1 | 57.9 | 109.2 | F | | |
| 6.2 | 13.1 | 32.9 | 62.9 | 138.4 | 229.5 | 420.3 | 714.0 | 1309.6 | 2875.9 | M | Ischaemic heart disease | 410-414/I20-I25 |
| 0.5 | 4.9 | 8.8 | 17.3 | 27.3 | 88.8 | 153.6 | 301.3 | 594.5 | 2155.0 | F | | |
| 0.5 | 1.6 | 2.7 | 2.5 | 5.2 | 7.0 | 15.5 | 18.3 | 39.2 | 62.8 | M | Pulmonary embolism and other venous | 415.1, 451-453/ I26, I80-I82 |
| 0.5 | 0.5 | 3.3 | 5.1 | 3.5 | 3.7 | 10.4 | 20.7 | 35.6 | 66.2 | F | | |
| 1.0 | 9.4 | 12.4 | 21.0 | 45.0 | 75.0 | 150.7 | 294.1 | 606.1 | 1329.5 | M | Cerebrovascular disease | 430-438/I60-I69 |
| 5.5 | 8.1 | 11.0 | 16.3 | 22.1 | 56.7 | 105.9 | 208.1 | 417.7 | 1417.9 | F | | |
| 5.3 | 8.4 | 20.0 | 25.5 | 53.6 | 91.2 | 201.0 | 371.9 | 673.0 | 1801.7 | M | Other vascular disease | Rest of 390-459/ rest of I00-I99 |
| 2.0 | 4.9 | 6.6 | 9.7 | 16.3 | 53.0 | 91.1 | 197.7 | 356.7 | 1510.9 | F | | |
| 1.9 | 1.0 | 5.4 | 12.5 | 21.3 | 55.6 | 184.5 | 327.2 | 623.5 | 990.0 | M | Chronic obstructive pulmonary disease | 490-496/ J40-J47, J67 |
| 1.0 | 2.2 | 6.1 | 11.2 | 39.0 | 97.8 | 214.4 | 362.5 | 428.9 | 436.9 | F | Other respiratory disease | Rest of 460-519/ rest of J00-J98 |
| 1.0 | 2.6 | 3.8 | 5.5 | 8.1 | 14.7 | 26.1 | 65.2 | 146.8 | 607.7 | M | | |
| 1.5 | 1.1 | 3.3 | 2.0 | 5.8 | 3.7 | 19.1 | 55.6 | 76.2 | 487.7 | F | | |
| - | 0.5 | 2.2 | 1.5 | 2.3 | 7.0 | 21.3 | 27.5 | 62.5 | 166.9 | M | Peptic ulcer | 531-533/K25-K27 |
| 0.5 | 0.5 | 1.1 | 2.0 | 2.3 | 3.7 | 12.2 | 27.3 | 52.8 | 159.3 | F | | |
| 6.2 | 25.2 | 38.9 | 46.0 | 65.2 | 64.9 | 64.7 | 53.8 | 32.0 | 11.4 | M | Liver cirrhosis | 571/K70, K74 |
| 5.5 | 4.3 | 20.4 | 16.8 | 23.9 | 22.4 | 17.4 | 15.1 | 17.3 | 8.5 | F | | |
| 1.0 | 1.6 | 1.1 | 1.5 | 2.3 | 7.0 | 16.4 | 21.7 | 50.9 | 182.6 | M | Renal disease | 580-590/N00-N19 |
| 0.5 | 1.6 | 2.2 | 1.5 | 4.1 | 5.2 | 13.0 | 17.9 | 32.5 | 78.2 | F | | |
| - | - | - | - | - | - | - | - | - | - | F | Pregnancy, birth | 630-676/A34,000-099 |
| 2.9 | 0.5 | 1.1 | 2.5 | 5.8 | 1.5 | 1.0 | - | 5.8 | - | M | Congenital and perinatal causes | 740-779/A33, P00-P96, Q00-Q99 |
| 1.5 | 0.5 | 1.7 | 3.1 | 4.1 | 5.2 | 1.7 | 4.7 | 2.0 | 2.1 | F | III-defined causes | 780-799/R00-R99 |
| 7.2 | 9.4 | 14.0 | 15.5 | 32.9 | 49.5 | 83.1 | 128.1 | 175.9 | 659.1 | M | | |
| 0.5 | 3.8 | 5.5 | 10.2 | 11.6 | 22.4 | 55.6 | 77.2 | 153.5 | 799.2 | F | | |
| 13.9 | 39.9 | 53.4 | 78.4 | 102.1 | 127.5 | 194.2 | 296.3 | 558.1 | 1502.1 | M | Other medical causes | Rest of 001-799/ rest of A00-R99 |
| 9.5 | 13.5 | 26.5 | 41.8 | 59.9 | 79.9 | 144.1 | 248.6 | 406.5 | 1402.4 | F | | |
| 62.8 | 73.4 | 76.6 | 62.9 | 64.0 | 61.1 | 56.0 | 120.1 | 219.5 | 624.8 | M | ALL NON- MEDICAL CAUSES | E800-E999/V01-Y89 |
| 21.1 | 23.8 | 33.7 | 29.6 | 27.3 | 29.1 | 46.0 | 65.9 | 139.2 | 558.8 | F | | |
| 7.7 | 8.4 | 6.5 | 9.5 | 13.3 | 7.7 | 11.6 | 19.5 | 33.4 | 25.7 | M | Road traffic accidents | E810-E819, E826-E829/ part of V01-V99, Y850 |
| 3.0 | 4.3 | 7.2 | 1.5 | 5.8 | 6.0 | 5.2 | 8.5 | 13.2 | 18.3 | F | | |
| 2.9 | 0.5 | 1.6 | 3.0 | 0.6 | - | - | 5.7 | 4.4 | 10.0 | M | Fire | E890-E899/X00-X09 |
| - | - | 0.6 | 2.6 | - | 2.2 | 0.9 | 0.9 | 3.0 | 8.5 | F | | |
| 23.5 | 28.8 | 31.8 | 27.5 | 21.9 | 29.4 | 26.1 | 44.6 | 33.4 | 69.9 | M | Suicide | E950-E959/X60-X84 |
| 8.0 | 7.0 | 9.9 | 13.8 | 9.3 | 9.0 | 10.4 | 12.2 | 9.1 | 23.3 | F | | |
| 1.9 | 3.1 | 1.6 | 2.0 | 1.7 | 0.8 | - | 1.1 | 2.9 | 1.4 | M | Homicide | E960-E969/ X85-X99, Y00-Y09 |
| 1.0 | 1.1 | 1.7 | 1.5 | 0.6 | - | 0.9 | - | 1.0 | 1.4 | F | | |
| 208.5 | 190.7 | 185.3 | 200.2 | 173.4 | 129.4 | 103.5 | 87.4 | 68.8 | 70.1 | M | POPULATION | |
| 199.2 | 184.6 | 181.1 | 196.0 | 171.9 | 134.0 | 115.2 | 106.2 | 98.4 | 141.9 | F | (1000s; UN, 2004 revision) | |

| |
|----------------------------|
| DENMARK: 1995, 2000 |
|----------------------------|

Male smoking-attributed deaths (Sm.) and total deaths (Total)

| | | ALL CAUSES | ALL CANCER | Lung cancer | Upper aero-digestive ca. (see below) | Other cancer | COPD | Other respiratory | Vascular disease | Liver cirrhosis | Other medical | Non-medical |
|-------------|-------|----------------|---------------|---------------|--------------------------------------|---------------|---------------|-------------------|------------------|-----------------|---------------|-------------|
| 1995 | | | | | | | | | | | | |
| 0-34 | Sm. | - | - | - | - | - | - | - | - | - | - | - |
| | Total | 1095 | 86 | 2 | 0 | 84 | 4 | 12 | 42 | 12 | 395 | 544 |
| 35-69 | Sm. | 2893 | 1285 | 853 | 172 | 260 | 289 | 37 | 770 | - | 512 | - |
| | Total | 9777 (30%) | 3027 (42%) | 930 (92%) | 285 (60%) | 1812 (14%) | 376 (77%) | 142 (26%) | 2990 (26%) | 464 | 1959 (26%) | 819 |
| 70+ | Sm. | 4619 | 1776 | 1125 | 140 | 511 | 1019 | 125 | 1243 | - | 456 | - |
| | Total | 20192 (23%) | 4836 (37%) | 1220 (92%) | 218 (64%) | 3398 (15%) | 1330 (77%) | 934 (13%) | 8977 (14%) | 86 | 3296 (14%) | 733 |
| Any age | Sm. | 7512 | 3061 | 1978 | 312 | 771 | 1308 | 162 | 2013 | - | 968 | - |
| | Total | 31064 (24%) | 7949 (39%) | 2152 (92%) | 503 (62%) | 5294 (15%) | 1710 (76%) | 1088 (15%) | 12009 (17%) | 562 | 5650 (17%) | 2096 |
| 2000 | | | | | | | | | | | | |
| 0-34 | Sm. | - | - | - | - | - | - | - | - | - | - | - |
| | Total | 838 | 83 | 3 | 5 | 75 | 2 | 6 | 37 | 8 | 293 | 409 |
| 35-69 | Sm. | 2465 | 1252 | 809 | 206 | 237 | 253 | 21 | 540 | - | 399 | - |
| | Total | 8759 (28%) | 3118 (40%) | 892 (91%) | 356 (58%) | 1870 (13%) | 341 (74%) | 85 (25%) | 2289 (24%) | 489 | 1650 (24%) | 787 |
| 70+ | Sm. | 4105 | 1618 | 1010 | 146 | 462 | 1058 | 70 | 938 | - | 421 | - |
| | Total | 18164 (23%) | 4631 (35%) | 1102 (92%) | 236 (62%) | 3293 (14%) | 1409 (75%) | 584 (12%) | 7428 (13%) | 77 | 3341 (13%) | 694 |
| Any age | Sm. | 6570 | 2870 | 1819 | 352 | 699 | 1311 | 91 | 1478 | - | 820 | - |
| | Total | 27761 (24%) | 7832 (37%) | 1997 (91%) | 597 (59%) | 5238 (13%) | 1752 (75%) | 675 (13%) | 9754 (15%) | 574 | 5284 (16%) | 1890 |

To be conservative, no deaths before age 35, and none from liver cirrhosis or non-medical causes, were attributed to smoking

Male death rates used for calculations: ICD codes as on previous page

| | All ages | 0-34 | 35-69 | 35-39 | 40-44 | 45-49 | 50-54 | 55-59 | 60-64 | 65-69 | 70-74 | 75-79 | 80+/ <i>NK</i> |
|---|----------|--------|---------|-------|-------|-------|-------|--------|--------|--------|--------|--------|----------------|
| POPULATION (1000s; UN, 2004 revision) | | | | | | | | | | | | | |
| 1995 | 2579.8 | 1234.3 | 1120.6 | 190.5 | 186.9 | 204.9 | 180.1 | 137.7 | 115.9 | 104.6 | 91.4 | 66.0 | 67.5 |
| 2000 | 2639.2 | 1221.9 | 1191.0 | 208.5 | 190.7 | 185.3 | 200.2 | 173.4 | 129.4 | 103.5 | 87.4 | 68.8 | 70.1 |
| NUMBER OF DEATHS (Source: WHO) | | | | | | | | | | | | | |
| All causes | | | | | | | | | | | | | |
| 1995 | 31064 | 1095 | 9777 | 364 | 537 | 834 | 1109 | 1502 | 2244 | 3187 | 4585 | 5056 | 10551 |
| 2000 | 27761 | 838 | 8759 | 286 | 468 | 723 | 1092 | 1665 | 1888 | 2637 | 3557 | 4706 | 9901 |
| Lung cancer | | | | | | | | | | | | | |
| 1995 | 2152 | 2 | 930 | 5 | 13 | 33 | 96 | 152 | 281 | 350 | 466 | 397 | 357 |
| 2000 | 1997 | 3 | 892 | 2 | 17 | 42 | 88 | 183 | 235 | 325 | 398 | 389 | 315 |
| ANNUAL DEATH RATE / 100,000 (*The rates for the age groups 0-34 and 35-69 are the means of seven five-yearly rates, but the all-ages rates are standardised to the conventional "European" age distribution) | | | | | | | | | | | | | |
| All causes | | | | | | | | | | | | | |
| 1995 | 1047.8* | 83.4* | 1082.1* | 191.1 | 287.3 | 407.0 | 615.8 | 1090.8 | 1936.2 | 3046.8 | 5016.4 | 7660.6 | 15631.1 |
| 2000 | 900.2* | 67.0* | 897.9* | 137.2 | 245.4 | 390.2 | 545.5 | 960.2 | 1459.0 | 2547.8 | 4069.8 | 6840.1 | 14124.1 |
| All cancer | | | | | | | | | | | | | |
| 1995 | 273.8* | 6.7* | 346.5* | 24.7 | 32.1 | 95.7 | 201.6 | 350.0 | 694.6 | 1026.8 | 1594.1 | 2143.9 | 2909.6 |
| 2000 | 259.4* | 6.7* | 329.0* | 20.6 | 46.7 | 107.4 | 178.8 | 372.0 | 584.2 | 993.2 | 1433.6 | 2036.3 | 2820.3 |
| Lung cancer | | | | | | | | | | | | | |
| 1995 | 75.6* | 0.1* | 109.5* | 2.6 | 7.0 | 16.1 | 53.3 | 110.4 | 242.5 | 334.6 | 509.8 | 601.5 | 528.9 |
| 2000 | 67.4* | 0.2* | 96.8* | 1.0 | 8.9 | 22.7 | 44.0 | 105.5 | 181.6 | 314.0 | 455.4 | 565.4 | 449.4 |
| Upper aerodigestive cancer (mouth, oesophagus, pharynx and larynx) | | | | | | | | | | | | | |
| 1995 | 18.1* | - | 30.6* | 1.0 | 4.3 | 17.1 | 27.2 | 36.3 | 59.5 | 68.8 | 91.9 | 90.9 | 109.6 |
| 2000 | 20.6* | 0.4* | 35.5* | 1.9 | 5.8 | 21.0 | 28.5 | 46.7 | 56.4 | 87.9 | 93.8 | 101.7 | 119.8 |
| Other cancer | | | | | | | | | | | | | |
| 1995 | 180.0* | 6.5* | 206.4* | 21.0 | 20.9 | 62.5 | 121.0 | 203.3 | 392.6 | 623.3 | 992.3 | 1451.5 | 2271.1 |
| 2000 | 171.5* | 6.1* | 196.7* | 17.7 | 32.0 | 63.7 | 106.4 | 219.7 | 346.2 | 591.3 | 884.4 | 1369.2 | 2251.1 |
| Chronic obstructive pulmonary disease (COPD) | | | | | | | | | | | | | |
| 1995 | 56.0* | 0.3* | 46.7* | 1.0 | 1.1 | 5.4 | 7.8 | 31.2 | 93.2 | 187.4 | 372.0 | 634.8 | 845.9 |
| 2000 | 55.1* | 0.2* | 40.3* | 1.9 | 1.0 | 5.4 | 12.5 | 21.3 | 55.6 | 184.5 | 327.2 | 623.5 | 990.0 |
| Other respiratory disease | | | | | | | | | | | | | |
| 1995 | 34.4* | 0.9* | 16.6* | 1.0 | 6.4 | 2.9 | 4.4 | 16.0 | 25.9 | 59.3 | 156.5 | 219.7 | 957.0 |
| 2000 | 20.4* | 0.5* | 8.8* | 1.0 | 2.6 | 3.8 | 5.5 | 8.1 | 14.7 | 26.1 | 65.2 | 146.8 | 607.7 |
| Vascular disease | | | | | | | | | | | | | |
| 1995 | 394.8* | 3.1* | 350.5* | 13.1 | 43.3 | 76.6 | 148.8 | 338.4 | 665.2 | 1168.3 | 1975.9 | 3337.9 | 7360.0 |
| 2000 | 307.0* | 2.8* | 246.8* | 12.9 | 33.6 | 71.2 | 116.9 | 253.2 | 423.5 | 816.4 | 1430.2 | 2686.0 | 6176.9 |
| Liver cirrhosis | | | | | | | | | | | | | |
| 1995 | 21.3* | 0.8* | 44.3* | 13.1 | 31.0 | 42.9 | 42.2 | 63.2 | 63.8 | 53.5 | 56.9 | 36.4 | 14.8 |
| 2000 | 20.6* | 0.5* | 44.4* | 6.2 | 25.2 | 38.9 | 46.0 | 65.2 | 64.9 | 64.7 | 53.8 | 32.0 | 11.4 |
| Other medical causes | | | | | | | | | | | | | |
| 1995 | 193.7* | 30.9* | 202.5* | 65.1 | 89.4 | 122.5 | 154.9 | 215.7 | 314.1 | 456.0 | 717.7 | 1050.0 | 2884.4 |
| 2000 | 172.7* | 23.8* | 163.2* | 31.7 | 62.9 | 86.9 | 122.9 | 176.5 | 255.0 | 406.8 | 639.6 | 1095.9 | 2893.0 |
| All non-medical causes | | | | | | | | | | | | | |
| 1995 | 73.9* | 40.7* | 75.0* | 73.0 | 84.0 | 61.0 | 56.1 | 76.3 | 79.4 | 95.6 | 143.3 | 237.9 | 659.3 |
| 2000 | 65.0* | 32.6* | 65.3* | 62.8 | 73.4 | 76.6 | 62.9 | 64.0 | 61.1 | 56.0 | 120.1 | 219.5 | 624.8 |

Rates and calculations for some earlier years are in Peto, Lopez et al, 1994

1995, 2000: DENMARK

Female smoking-attributed deaths (Sm.) and total deaths (Total)

| | | ALL CAUSES | ALL CANCER | Lung cancer | Upper aero-digestive ca. (see below) | Other cancer | COPD | Other respiratory | Vascular disease | Liver cirrhosis | Other medical | Non-medical |
|-------------|-------|----------------|---------------|---------------|--------------------------------------|--------------|---------------|-------------------|------------------|-----------------|---------------|-------------|
| 1995 | | | | | | | | | | | | |
| 0-34 | Sm. | - | - | - | - | - | - | - | - | - | - | - |
| | Total | 520 | 85 | 3 | 0 | 82 | 4 | 6 | 38 | 9 | 260 | 118 |
| 35-69 | Sm. | 2034 | 822 | 624 | 62 | 136 | 367 | 35 | 446 | - | 364 | - |
| | Total | 6823 (30%) | 3180 (26%) | 711 (88%) | 96 (65%) | 2373 (6%) | 452 (81%) | 106 (33%) | 1321 (34%) | 221 | 1099 (33%) | 444 |
| 70+ | Sm. | 3392 | 783 | 542 | 74 | 167 | 750 | 125 | 1195 | - | 539 | - |
| | Total | 24408 (14%) | 4487 (17%) | 640 (85%) | 126 (59%) | 3721 (4%) | 989 (76%) | 1267 (10%) | 11558 (10%) | 68 | 5073 (11%) | 966 |
| Any age | Sm. | 5426 | 1605 | 1166 | 136 | 303 | 1117 | 160 | 1641 | - | 903 | - |
| | Total | 31751 (17%) | 7752 (21%) | 1354 (86%) | 222 (61%) | 6176 (5%) | 1445 (77%) | 1379 (12%) | 12917 (13%) | 298 | 6432 (14%) | 1528 |
| 2000 | | | | | | | | | | | | |
| 0-34 | Sm. | - | - | - | - | - | - | - | - | - | - | - |
| | Total | 431 | 68 | 3 | 1 | 64 | 2 | 4 | 25 | 2 | 208 | 122 |
| 35-69 | Sm. | 1784 | 758 | 583 | 60 | 115 | 384 | 17 | 325 | - | 300 | - |
| | Total | 6089 (29%) | 3007 (25%) | 677 (86%) | 98 (61%) | 2232 (5%) | 484 (79%) | 52 (33%) | 1035 (31%) | 180 | 987 (30%) | 344 |
| 70+ | Sm. | 4016 | 952 | 656 | 95 | 201 | 1135 | 100 | 1188 | - | 641 | - |
| | Total | 22763 (18%) | 4571 (21%) | 753 (87%) | 150 (63%) | 3668 (5%) | 1427 (80%) | 826 (12%) | 9717 (12%) | 45 | 5177 (12%) | 1000 |
| Any age | Sm. | 5800 | 1710 | 1239 | 155 | 316 | 1519 | 117 | 1513 | - | 941 | - |
| | Total | 29283 (20%) | 7646 (22%) | 1433 (86%) | 249 (62%) | 5964 (5%) | 1913 (79%) | 882 (13%) | 10777 (14%) | 227 | 6372 (15%) | 1466 |

To be conservative, no deaths before age 35, and none from liver cirrhosis or non-medical causes, were attributed to smoking

Female death rates used for calculations

| | All ages | 0-34 | 35-69 | 35-39 | 40-44 | 45-49 | 50-54 | 55-59 | 60-64 | 65-69 | 70-74 | 75-79 | 80+/ NK |
|---|----------|--------|--------|-------|-------|-------|-------|-------|--------|--------|--------|--------|------------|
| POPULATION (1000s; UN, 2004 revision) | | | | | | | | | | | | | |
| 1995 | 2648.2 | 1177.7 | 1121.0 | 182.7 | 181.4 | 198.6 | 176.3 | 139.3 | 123.8 | 118.9 | 116.3 | 95.4 | 137.8 |
| 2000 | 2700.3 | 1171.8 | 1182.0 | 199.2 | 184.6 | 181.1 | 196.0 | 171.9 | 134.0 | 115.2 | 106.2 | 98.4 | 141.9 |
| NUMBER OF DEATHS (Source: WHO) | | | | | | | | | | | | | |
| All causes | | | | | | | | | | | | | |
| 1995 | 31751 | 520 | 6823 | 210 | 333 | 568 | 810 | 1013 | 1539 | 2350 | 3366 | 4346 | 16696 |
| 2000 | 29283 | 431 | 6089 | 156 | 244 | 454 | 763 | 1057 | 1385 | 2030 | 2904 | 4073 | 15786 |
| Lung cancer | | | | | | | | | | | | | |
| 1995 | 1354 | 3 | 711 | 3 | 27 | 46 | 84 | 125 | 181 | 245 | 236 | 202 | 202 |
| 2000 | 1433 | 3 | 677 | 4 | 19 | 30 | 83 | 134 | 171 | 236 | 250 | 252 | 251 |
| ANNUAL DEATH RATE / 100,000 (*The rates for the age groups 0-34 and 35-69 are the means of seven five-yearly rates, but the all-ages rates are standardised to the conventional "European" age distribution) | | | | | | | | | | | | | |
| All causes | | | | | | | | | | | | | |
| 1995 | 700.1* | 42.4* | 713.0* | 114.9 | 183.6 | 286.0 | 459.4 | 727.2 | 1243.1 | 1976.5 | 2894.2 | 4555.6 | 12116.1 |
| 2000 | 624.6* | 36.2* | 608.7* | 78.3 | 132.2 | 250.7 | 389.3 | 614.9 | 1033.6 | 1762.2 | 2734.5 | 4139.2 | 11124.7 |
| All cancer | | | | | | | | | | | | | |
| 1995 | 209.0* | 6.8* | 329.3* | 37.2 | 75.5 | 145.0 | 254.1 | 384.1 | 582.4 | 826.7 | 920.0 | 1204.4 | 1645.9 |
| 2000 | 197.8* | 5.4* | 298.4* | 25.6 | 57.4 | 111.5 | 212.2 | 342.1 | 532.8 | 807.3 | 1012.2 | 1242.9 | 1601.8 |
| Lung cancer | | | | | | | | | | | | | |
| 1995 | 40.4* | 0.2* | 75.6* | 1.6 | 14.9 | 23.2 | 47.6 | 89.7 | 146.2 | 206.1 | 202.9 | 211.7 | 146.6 |
| 2000 | 40.1* | 0.2* | 68.8* | 2.0 | 10.3 | 16.6 | 42.3 | 78.0 | 127.6 | 204.9 | 235.4 | 256.1 | 176.9 |
| Upper aerodigestive cancer (mouth, oesophagus, pharynx and larynx) | | | | | | | | | | | | | |
| 1995 | 6.1* | - | 10.2* | 0.5 | 1.1 | 2.5 | 7.9 | 14.4 | 18.6 | 26.1 | 28.4 | 31.4 | 45.7 |
| 2000 | 6.5* | 0.1* | 9.8* | 0.5 | - | 5.5 | 5.6 | 12.8 | 18.7 | 25.2 | 35.8 | 40.7 | 50.7 |
| Other cancer | | | | | | | | | | | | | |
| 1995 | 162.5* | 6.6* | 243.5* | 35.0 | 59.5 | 119.3 | 198.5 | 280.0 | 417.6 | 594.6 | 688.7 | 961.2 | 1453.6 |
| 2000 | 151.3* | 5.1* | 219.9* | 23.1 | 47.1 | 89.5 | 164.3 | 251.3 | 386.6 | 577.3 | 741.1 | 946.1 | 1374.2 |
| Chronic obstructive pulmonary disease (COPD) | | | | | | | | | | | | | |
| 1995 | 36.5* | 0.3* | 51.2* | 1.1 | 1.7 | 3.0 | 14.2 | 38.0 | 117.9 | 182.5 | 258.0 | 280.9 | 305.5 |
| 2000 | 45.5* | 0.2* | 53.1* | 1.0 | 2.2 | 6.1 | 11.2 | 39.0 | 97.8 | 214.4 | 362.5 | 428.9 | 436.9 |
| Other respiratory disease | | | | | | | | | | | | | |
| 1995 | 24.6* | 0.5* | 10.8* | 1.6 | 5.0 | 4.5 | 10.8 | 9.3 | 12.9 | 31.1 | 73.1 | 162.5 | 745.3 |
| 2000 | 15.0* | 0.3* | 5.2* | 1.5 | 1.1 | 3.3 | 2.0 | 5.8 | 3.7 | 19.1 | 55.6 | 76.2 | 487.7 |
| Vascular disease | | | | | | | | | | | | | |
| 1995 | 243.0* | 2.9* | 145.7* | 8.2 | 19.3 | 33.2 | 47.6 | 117.7 | 273.8 | 519.8 | 1000.0 | 1874.2 | 6246.0 |
| 2000 | 195.5* | 2.0* | 108.5* | 8.5 | 18.4 | 30.9 | 50.0 | 72.1 | 205.2 | 374.1 | 759.9 | 1465.4 | 5262.9 |
| Liver cirrhosis | | | | | | | | | | | | | |
| 1995 | 10.3* | 0.7* | 21.0* | 8.2 | 11.6 | 14.6 | 24.4 | 33.0 | 27.5 | 27.8 | 24.1 | 19.9 | 15.2 |
| 2000 | 7.6* | 0.1* | 15.8* | 5.5 | 4.3 | 20.4 | 16.8 | 23.9 | 22.4 | 17.4 | 15.1 | 17.3 | 8.5 |
| Other medical causes | | | | | | | | | | | | | |
| 1995 | 139.0* | 21.9* | 113.5* | 26.3 | 39.1 | 51.9 | 70.9 | 106.2 | 189.8 | 310.3 | 532.2 | 853.2 | 2641.5 |
| 2000 | 129.6* | 17.8* | 97.6* | 15.1 | 24.9 | 44.7 | 67.3 | 104.7 | 142.5 | 283.9 | 463.3 | 769.3 | 2768.1 |
| All non-medical causes | | | | | | | | | | | | | |
| 1995 | 37.6* | 9.4* | 41.5* | 32.3 | 31.4 | 33.7 | 37.4 | 38.8 | 38.8 | 78.2 | 86.8 | 160.4 | 516.7 |
| 2000 | 33.6* | 10.3* | 30.1* | 21.1 | 23.8 | 33.7 | 29.6 | 27.3 | 29.1 | 46.0 | 65.9 | 139.2 | 558.8 |

Rates and calculations for some earlier years are in Peto, Lopez et al, 1994

DENMARK: 2000

Relative importance of deaths in MIDDLE age (35–69) in the year 2000

| Age range (years) | Deaths attributed to SMOKING /total deaths (thousands) | | Mean years lost PER DEATH FROM SMOKING |
|-------------------|--|-----------|--|
| | Male | Female | |
| 0–34 | – / 0.8 | – / 0.4 | – |
| 35–69 | 2.5 / 8.8 | 1.8 / 6.1 | 22 years |
| 70+ | 4.1 / 18 | 4.0 / 23 | 8 years |
| All ages | 6.6 / 28 | 5.8 / 29 | 13 years |

Deaths, by cause, attributed to SMOKING / total deaths (thousands) in the year 2000

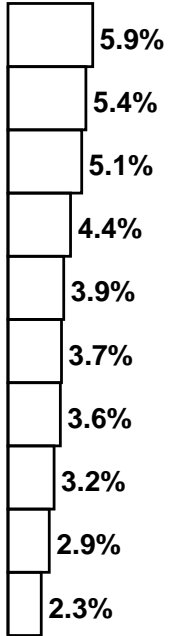
| Cause | Male (by age) | | | | Female (by age) | | | |
|-------------|---------------|------------------|------------------|---------|-----------------|------------------|------------------|---------|
| | 0–34 | 35–69 | 70+ | All | 0–34 | 35–69 | 70+ | All |
| Lung Cancer | –/0.0 | 0.8/0.9 | 1.0/1.1 | 1.8/2.0 | –/0.0 | 0.6/0.7 | 0.7/0.8 | 1.2/1.4 |
| All Cancer | –/0.1 | 1.3/3.1 (40%) | 1.6/4.6 (35%) | 2.9/7.8 | –/0.1 | 0.8/3.0 (25%) | 1.0/4.6 (21%) | 1.7/7.6 |
| Vascular | –/0.0 | 0.5/2.3 | 0.9/7.4 | 1.5/9.8 | –/0.0 | 0.3/1.0 | 1.2/9.7 | 1.5/11 |
| Respiratory | –/0.0 | 0.3/0.4 | 1.1/2.0 | 1.4/2.4 | –/0.0 | 0.4/0.5 | 1.2/2.3 | 1.6/2.8 |
| All Other | –/0.7 | 0.4/2.9 | 0.4/4.1 | 0.8/7.7 | –/0.3 | 0.3/1.5 | 0.6/6.2 | 0.9/8.1 |
| All Causes | –/0.8 | 2.5/8.8 (28%) | 4.1/18 (23%) | 6.6/28 | –/0.4 | 1.8/6.1 (29%) | 4.0/23 (18%) | 5.8/29 |

Cancer deaths, and all deaths, attributed to SMOKING / total deaths (thousands) in the year 2000

| Cause | Male | Female | Male + Female |
|------------|--------------------|--------------------|-------------------|
| All Cancer | 2.9 / 7.8 (37%) | 1.7 / 7.6 (22%) | 4.6 / 15 (30%) |
| All Causes | 6.6 / 28 (24%) | 5.8 / 29 (20%) | 12 / 57 (22%) |

1955-2000: DENMARK

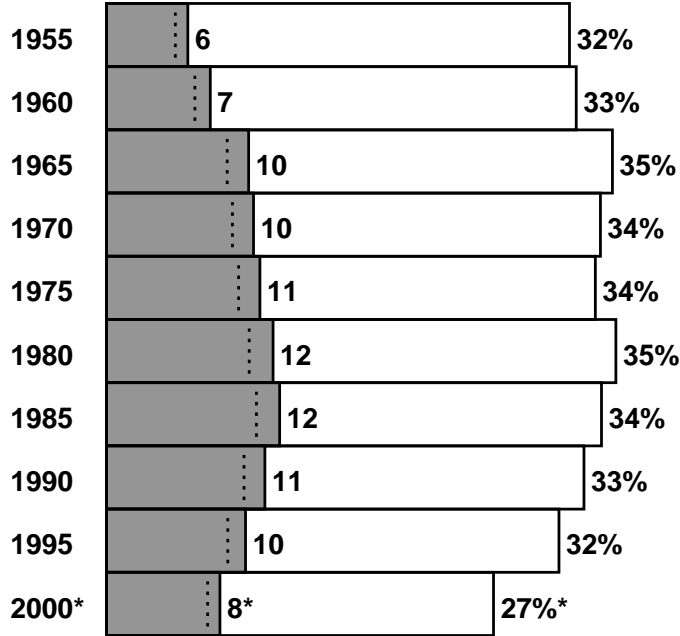
Population risk of dying at ages 0-34



Population risk of a 35-year-old dying at ages 35-69 from smoking (shaded) or from any cause (shaded and white)

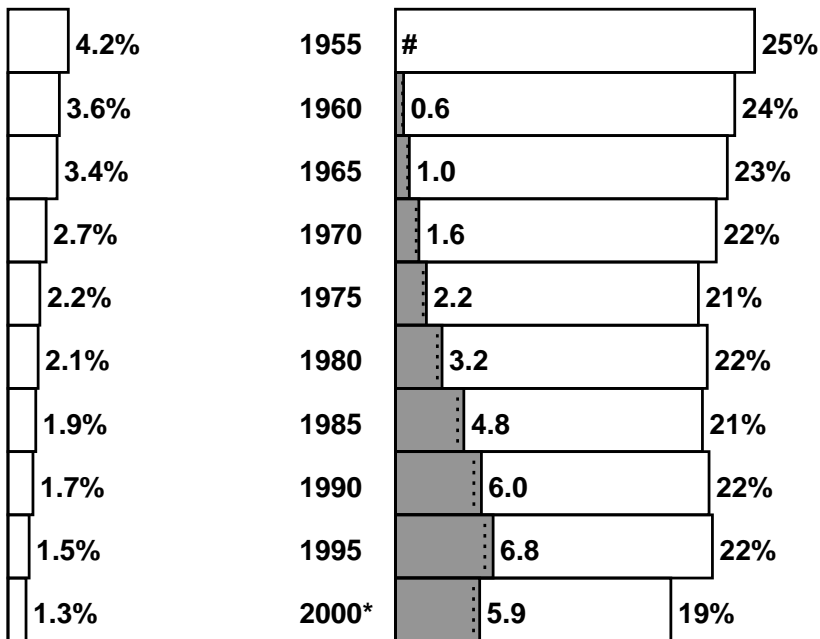
*eg, at year 2000 male death rates, out of 100 men aged 35, 27 would die before age 70 (with 8 of these deaths attributed to smoking)

MALE



Note: Most of those killed by smoking would otherwise have survived beyond age 70, but a minority (shaded area to right of dotted line) would have died by 70 anyway

FEMALE



Real risk too low to estimate reliably

DENMARK: 1950-2000

Numbers of deaths attributed to smoking / total deaths (thousands)

| Year | Male (by age) | | | | Female (by age) | | | |
|------|---------------|-------------------------|------------------------|--------|-----------------|-------------------------|------------------------|--------|
| | 0-34 | 35-69 | 70+ | All | 0-34 | 35-69 | 70+ | All |
| 1950 | ... | ... | ... | ... | ... | ... | ... | ... |
| 1955 | -/2.2 | 1.4/7.8 (18%) | 0.4/10 (4%) | 1.8/20 | -/1.5 | 0.0/6.3 | 0.0/11 | 0.0/18 |
| 1960 | -/2.0 | 2.0/8.6 (23%) | 0.8/12 (6%) | 2.7/23 | -/1.2 | 0.1/6.4 (2%) | 0.3/13 (2%) | 0.4/21 |
| 1965 | -/2.0 | 2.9/10 (28%) | 1.4/14 (10%) | 4.3/26 | -/1.3 | 0.3/6.7 (4%) | 0.3/14 (2%) | 0.5/22 |
| 1970 | -/1.7 | 3.0/10 (30%) | 1.9/14 (13%) | 4.9/26 | -/1.0 | 0.5/6.8 (7%) | 0.5/14 (3%) | 1.0/22 |
| 1975 | -/1.5 | 3.3/10 (31%) | 2.7/16 (17%) | 5.9/28 | -/0.8 | 0.7/6.5 (10%) | 0.6/16 (4%) | 1.3/23 |
| 1980 | -/1.4 | 3.6/11 (32%) | 3.8/18 (21%) | 7.3/30 | -/0.7 | 1.0/6.7 (15%) | 1.1/18 (6%) | 2.1/26 |
| 1985 | -/1.3 | 3.6/11 (34%) | 4.2/18 (23%) | 7.9/30 | -/0.6 | 1.5/6.6 (22%) | 1.7/21 (8%) | 3.2/28 |
| 1990 | -/1.2 | 3.3/10 (32%) | 4.3/20 (22%) | 7.6/31 | -/0.6 | 1.8/6.8 (27%) | 2.6/22 (11%) | 4.4/30 |
| 1995 | -/1.1 | 2.9/9.8 (30%) | 4.6/20 (23%) | 7.5/31 | -/0.5 | 2.0/6.8 (30%) | 3.4/24 (14%) | 5.4/32 |
| 2000 | -/0.8 | 2.5/8.8 (28%) | 4.1/18 (23%) | 6.6/28 | -/0.4 | 1.8/6.1 (29%) | 4.0/23 (18%) | 5.8/29 |

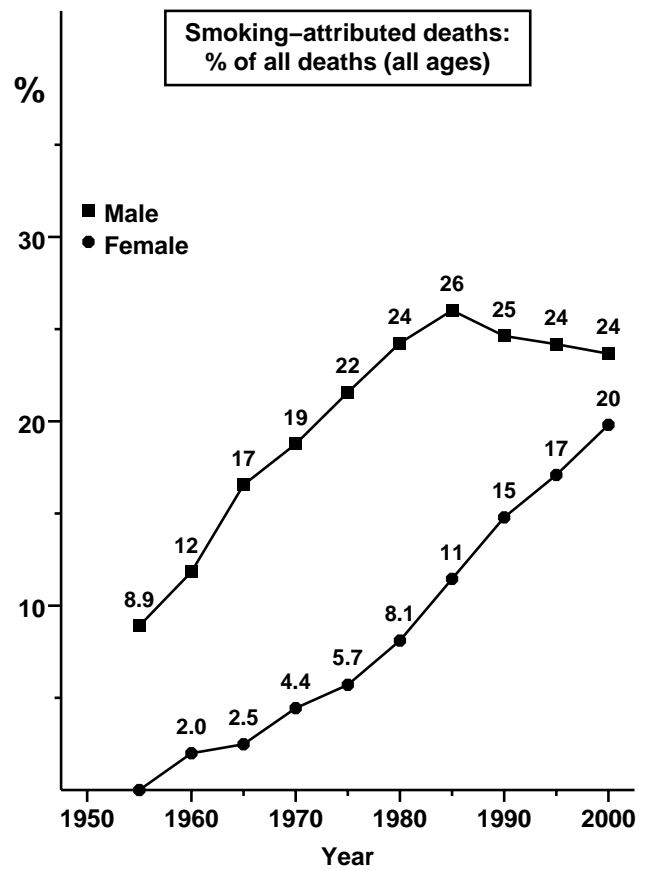
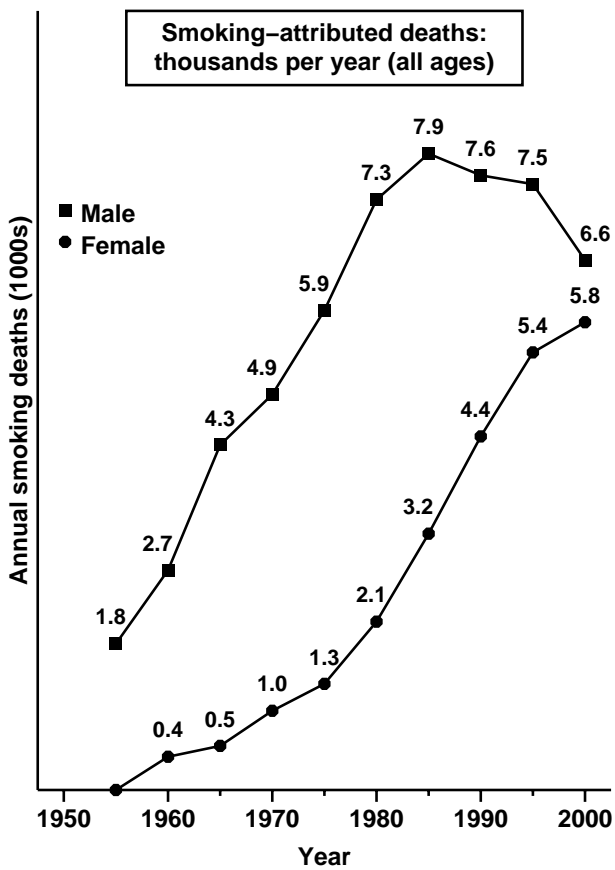
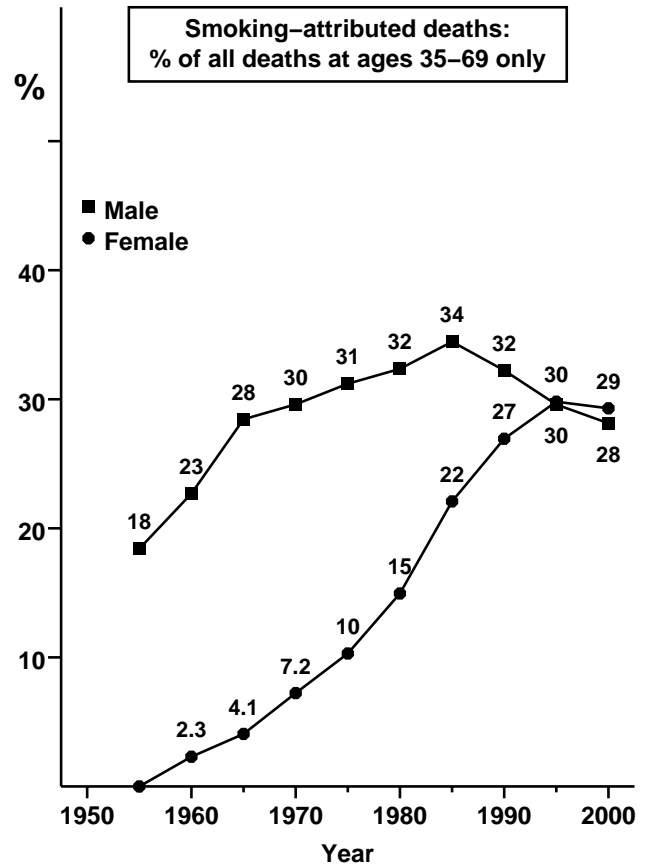
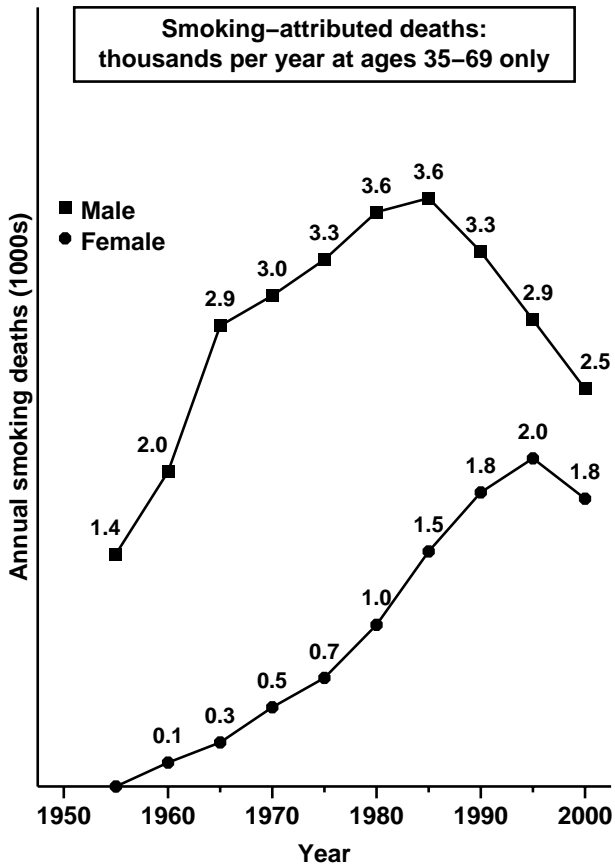
50-year total* (thousands), mid-1950 to mid-2000: **379 / 2582**

1950-2000 by age & sex:

| | | | | | | | |
|------|-------------------------|-------------------------|----------|------|------------------------|-----------------------|----------|
| -/81 | 141/487 (29%) | 133/784 (17%) | 274/1352 | -/47 | 44/329 (13%) | 60/854 (7%) | 105/1230 |
|------|-------------------------|-------------------------|----------|------|------------------------|-----------------------|----------|

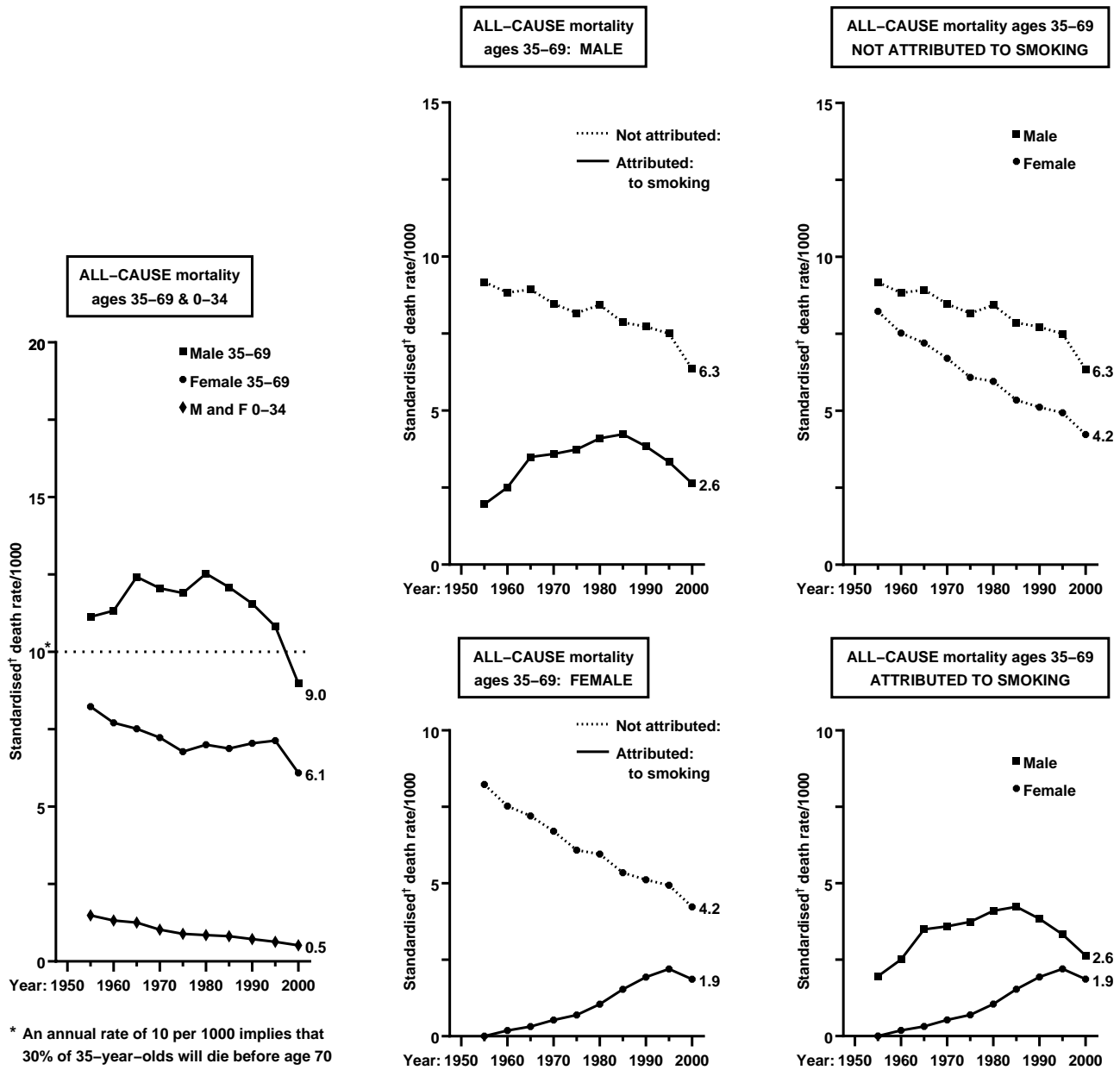
*Estimated as 10 times the sum of the annual numbers for 1955, 1965, 1975, 1985 & 1995

1955-2000: DENMARK



DENMARK: 1955-2000

ALL-CAUSE mortality rates attributed and not attributed to smoking

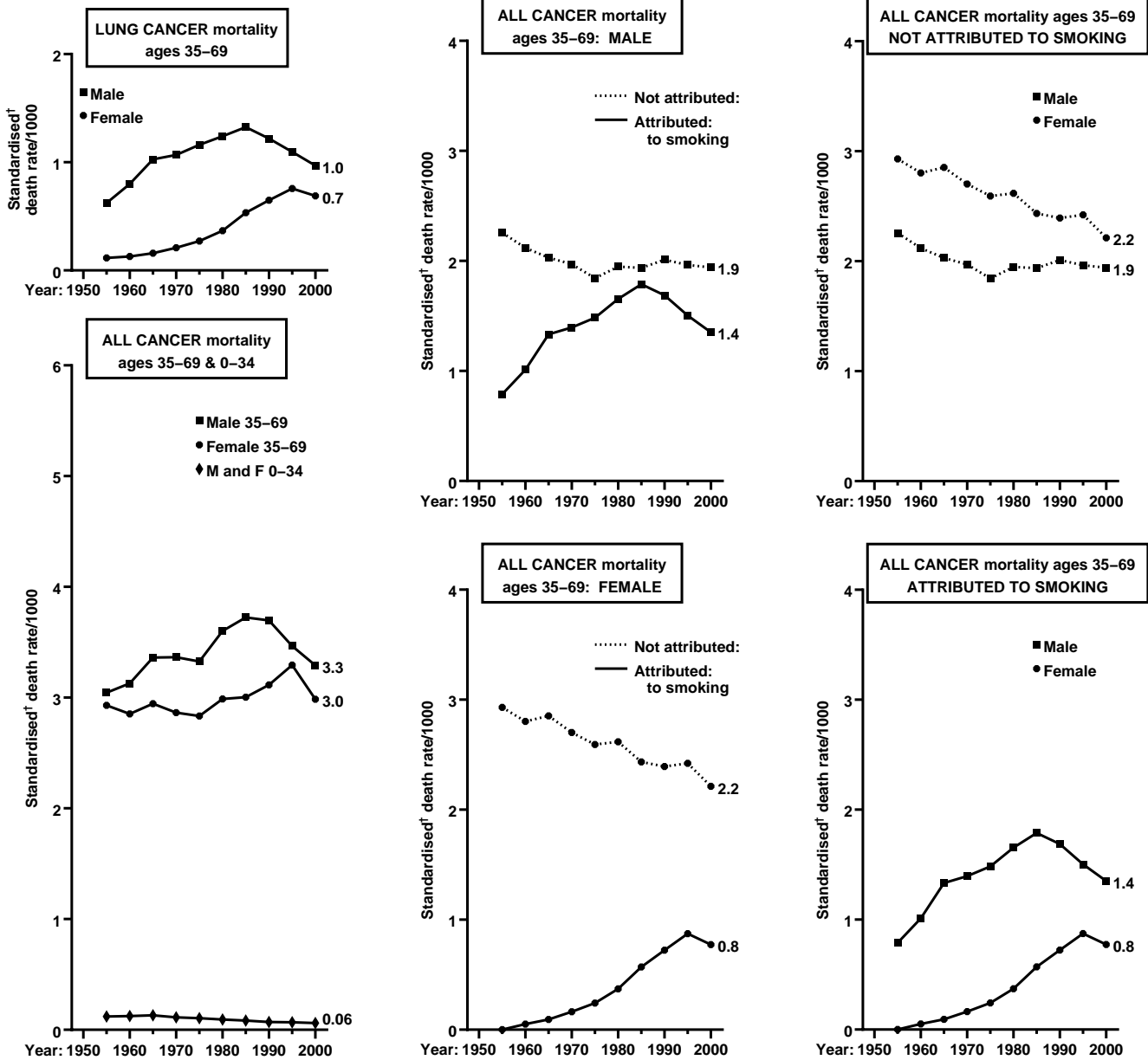


| Year | MALE all-cause mortality (annual rate/1000, by age) | | | | | | | | FEMALE all-cause mortality (annual rate/1000, by age) | | | | | | | | | |
|------|---|------|-------|------|-------|------|------|------|---|------|-------|------|------|------|-------|------|-------|------|
| | 0-34 | | 35-69 | | 70-79 | | 0-34 | | 35-69 | | 70-79 | | 0-34 | | 35-69 | | 70-79 | |
| | Attributed to smoking? | Yes | No | Yes | No | Yes | No | Yes | No | Yes | No | Yes | No | Yes | No | Yes | No | |
| 1950 | ... | ... | ... | ... | ... | ... | ... | ... | ... | ... | ... | ... | ... | ... | ... | ... | ... | |
| 1955 | - | 1.74 | 1.96 | 9.17 | 2.64 | 61.2 | - | 1.23 | 0.00 | 8.23 | 0.00 | 55.1 | - | 1.23 | 0.18 | 7.52 | 1.38 | 54.0 |
| 1960 | - | 1.59 | 2.50 | 8.82 | 4.91 | 62.5 | - | 1.04 | 0.31 | 7.20 | 1.34 | 50.2 | - | 0.99 | 0.53 | 6.70 | 1.83 | 42.0 |
| 1965 | - | 1.51 | 3.49 | 8.93 | 8.51 | 60.1 | - | 0.77 | 0.69 | 6.08 | 2.00 | 37.4 | - | 0.77 | 0.69 | 6.08 | 2.00 | 37.4 |
| 1970 | - | 1.27 | 3.59 | 8.46 | 10.4 | 55.4 | - | 0.64 | 1.05 | 5.95 | 2.84 | 34.4 | - | 0.64 | 1.05 | 5.95 | 2.84 | 34.4 |
| 1975 | - | 1.13 | 4.10 | 8.43 | 16.7 | 51.8 | - | 0.61 | 1.05 | 5.95 | 2.84 | 34.4 | - | 0.61 | 1.05 | 5.95 | 2.84 | 34.4 |
| 1980 | - | 1.09 | 4.23 | 7.86 | 17.0 | 48.1 | - | 0.56 | 1.53 | 5.34 | 4.23 | 32.0 | - | 0.56 | 1.53 | 5.34 | 4.23 | 32.0 |
| 1985 | - | 1.06 | 3.83 | 7.72 | 16.8 | 47.8 | - | 0.50 | 1.93 | 5.11 | 5.70 | 30.3 | - | 0.50 | 1.93 | 5.11 | 5.70 | 30.3 |
| 1990 | - | 0.93 | 3.33 | 7.50 | 17.3 | 46.1 | - | 0.42 | 2.20 | 4.93 | 7.47 | 29.8 | - | 0.42 | 2.20 | 4.93 | 7.47 | 29.8 |
| 1995 | - | 0.83 | 2.63 | 6.35 | 14.7 | 39.8 | - | 0.36 | 1.86 | 4.23 | 8.92 | 25.4 | - | 0.36 | 1.86 | 4.23 | 8.92 | 25.4 |
| 2000 | - | 0.67 | 2.63 | 6.35 | 14.7 | 39.8 | - | 0.36 | 1.86 | 4.23 | 8.92 | 25.4 | - | 0.36 | 1.86 | 4.23 | 8.92 | 25.4 |

0-34 and 35-69 = means of 7 age-specific rates; 70-79 = mean of 2 rates (70-74 & 75-79)

1955-2000: DENMARK

ALL CANCER mortality rates attributed and not attributed to smoking



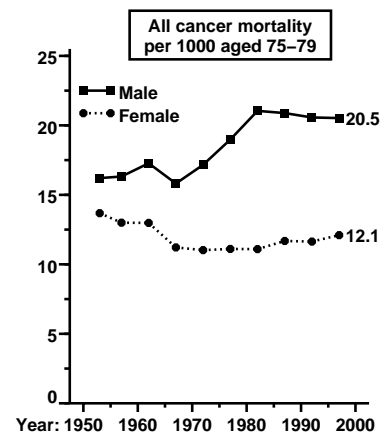
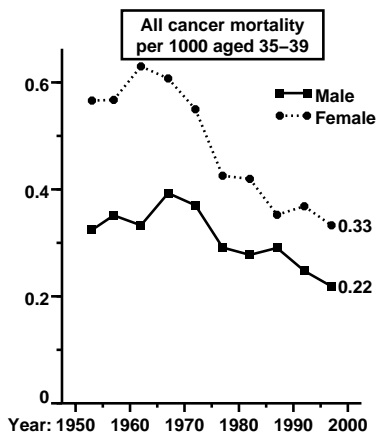
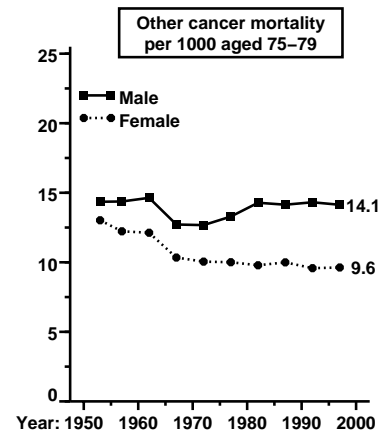
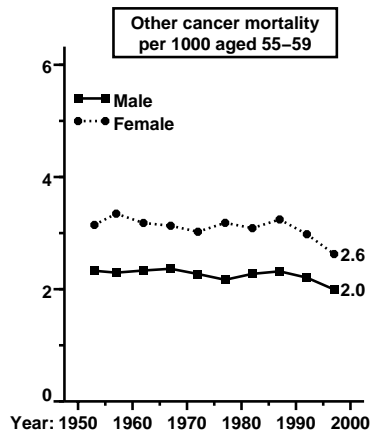
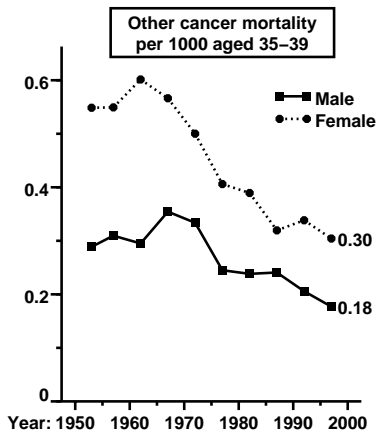
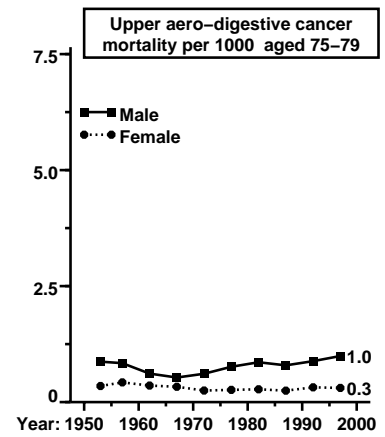
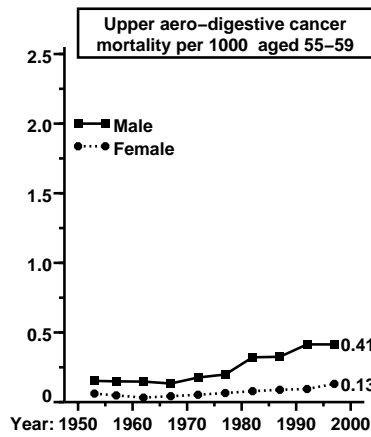
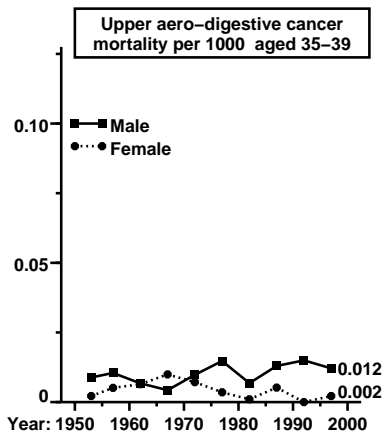
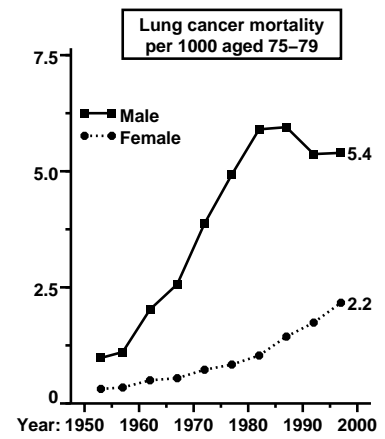
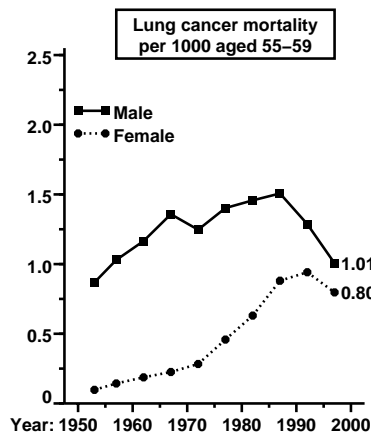
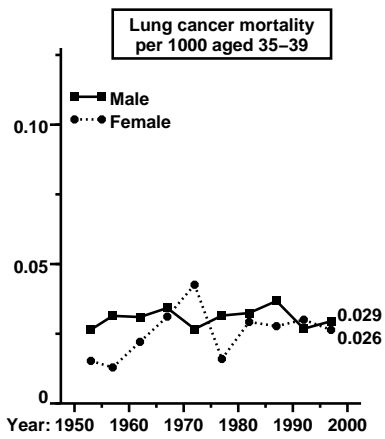
† Mean of 7 age-specific rates, ages 35-69 (or ages 0-34)

| Year | MALE cancer mortality (annual rate/1000, by age) | | | | | | | | FEMALE cancer mortality (annual rate/1000, by age) | | | | | | | |
|------|--|------|-------|------|-------|------|------|------|--|------|-------|------|--|--|--|--|
| | 0-34 | | 35-69 | | 70-79 | | 0-34 | | 35-69 | | 70-79 | | | | | |
| | Attributed to smoking? | | Yes | No | Yes | No | Yes | No | Yes | No | Yes | No | | | | |
| 1950 | ... | ... | ... | ... | ... | ... | ... | ... | ... | ... | ... | ... | | | | |
| 1955 | - | 0.12 | 0.79 | 2.26 | 1.22 | 12.9 | - | 0.12 | 0.00 | 2.93 | 0.00 | 11.0 | | | | |
| 1960 | - | 0.13 | 1.01 | 2.12 | 2.06 | 12.2 | - | 0.12 | 0.05 | 2.80 | 0.35 | 10.8 | | | | |
| 1965 | - | 0.14 | 1.33 | 2.03 | 3.46 | 11.8 | - | 0.12 | 0.09 | 2.85 | 0.34 | 10.5 | | | | |
| 1970 | - | 0.11 | 1.39 | 1.97 | 4.03 | 10.3 | - | 0.11 | 0.16 | 2.70 | 0.50 | 9.31 | | | | |
| 1975 | - | 0.11 | 1.48 | 1.84 | 5.57 | 10.3 | - | 0.10 | 0.24 | 2.59 | 0.59 | 8.80 | | | | |
| 1980 | - | 0.09 | 1.65 | 1.95 | 7.16 | 11.1 | - | 0.09 | 0.37 | 2.62 | 0.90 | 9.09 | | | | |
| 1985 | - | 0.09 | 1.79 | 1.94 | 7.27 | 10.4 | - | 0.08 | 0.57 | 2.43 | 1.29 | 8.72 | | | | |
| 1990 | - | 0.08 | 1.69 | 2.01 | 7.25 | 11.0 | - | 0.06 | 0.72 | 2.39 | 1.85 | 8.61 | | | | |
| 1995 | - | 0.07 | 1.50 | 1.96 | 7.58 | 11.1 | - | 0.07 | 0.87 | 2.42 | 2.33 | 8.30 | | | | |
| 2000 | - | 0.07 | 1.35 | 1.94 | 6.88 | 10.5 | - | 0.05 | 0.77 | 2.21 | 2.87 | 8.40 | | | | |

0-34 and 35-69 = means of 7 age-specific rates; 70-79 = mean of 2 rates (70-74 & 75-79)

DENMARK: 1952-2000

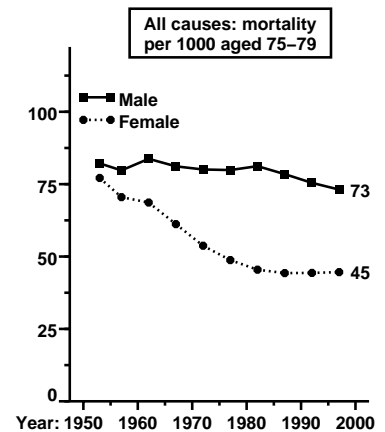
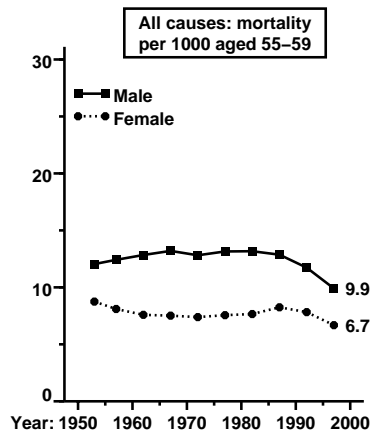
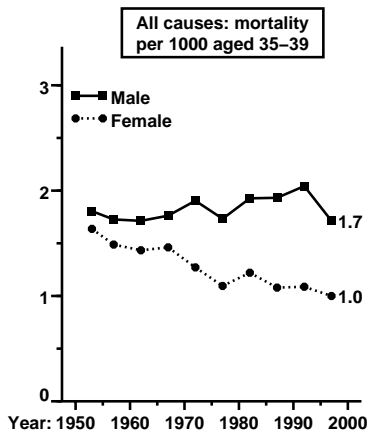
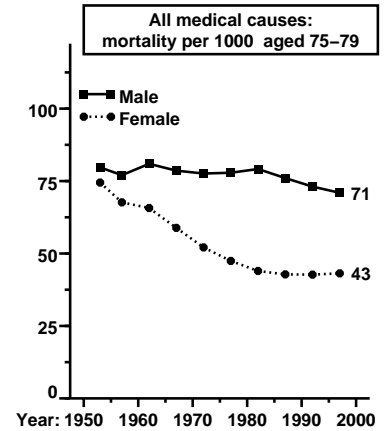
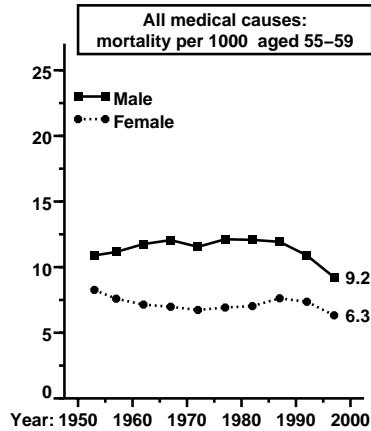
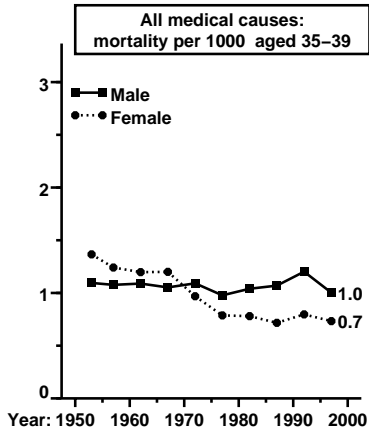
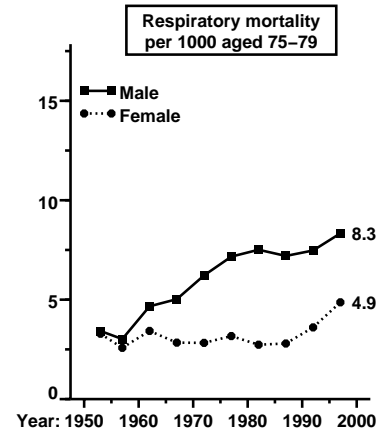
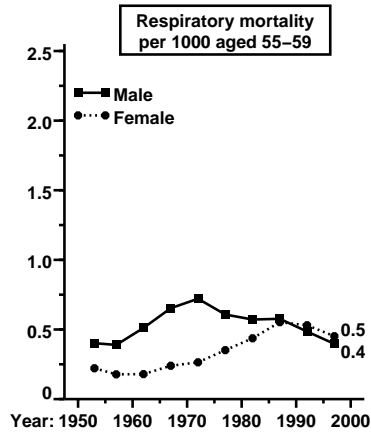
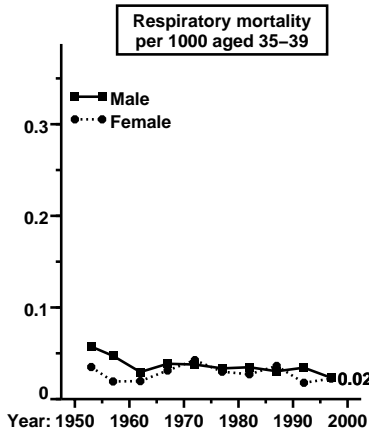
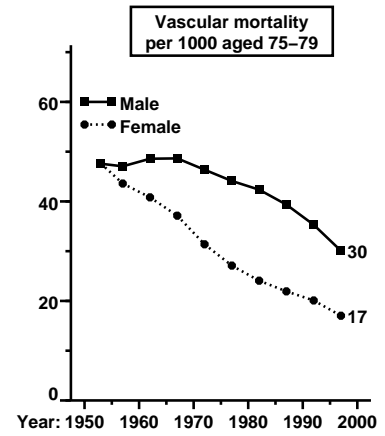
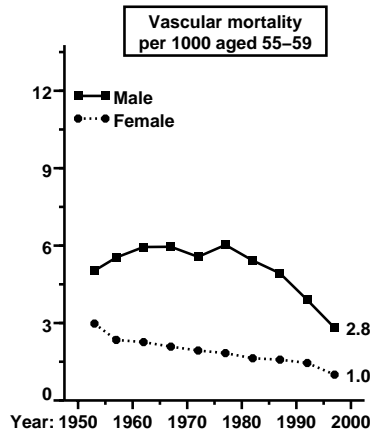
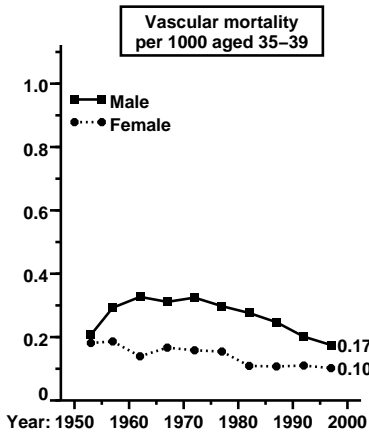
Mortality* trends at selected ages: 35-39, 55-59 & 75-79



* Annual mortality per 1000: averages of years available in 1950-54,.....,1995-99; year 2000 on pages 152-153

1952-2000: DENMARK

Mortality* trends at selected ages: 35-39, 55-59 & 75-79



* Annual mortality per 1000: averages of years available in 1950-54,.....,1995-99; year 2000 on pages 152-153